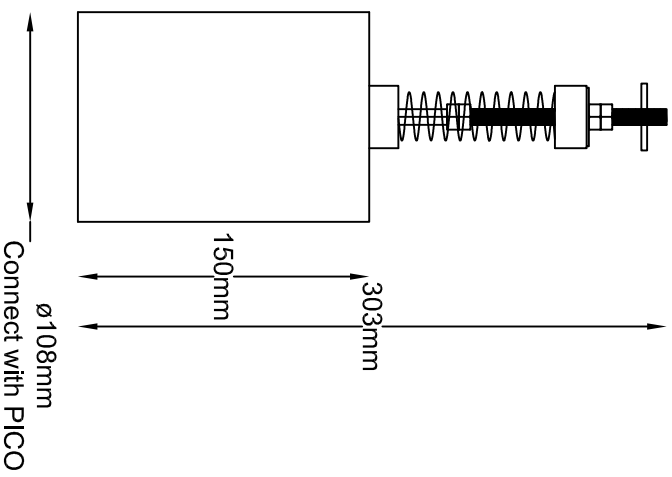
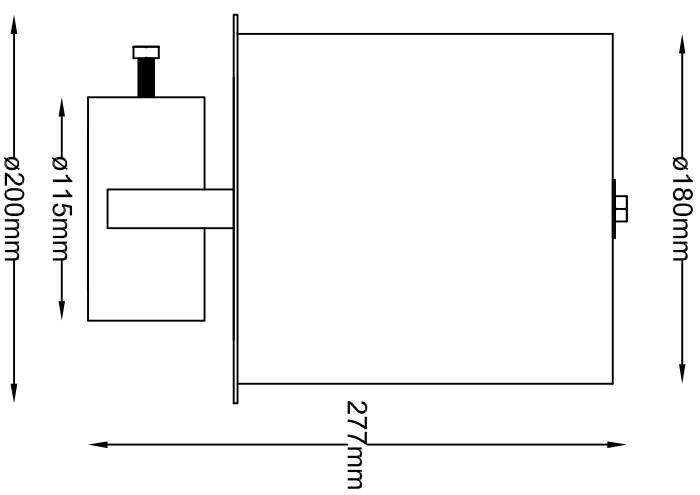


SV-108 + LD-108
Weight: 5,7kg



SV-108
Weight: 1,7kg



LD-0108
Weight: 3,7kg

		Projekt	
		SV108 und LD108	
		Welafix Industrietechnik GmbH	
		Safety Valve for HV-systems	
		Maximum inlet area 42cm ²	
		2017-09-15	