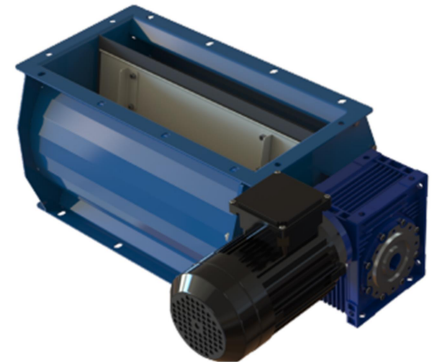


# RVLA – Zellenradschleuse

geschweißt aus Stahlblech 2-3mm, Farbe RAL 5010

Zellenradschleusen sind für eine drucklose Ausschleusung von feinkörnigen und staubförmigen Produkten oder Granulaten aus einem Trockenfilter / Zyklonabscheider konzipiert worden.

Ein gleichmäßig drehender Rotor mit auswechselbaren Gummilippen sorgt für eine volumetrisch dosierte Austragung.



**Most common applications:**

- wood industry,
- plastic industry,
- dust extraction installation,
- waste treatment industry.

**Temperature range:**

-20°C up to +80°C.

**This product meets the following harmonized standards:**

2006/42/EC ; Machine directive;  
2014/35/EC ; Low voltage;  
directive  
2014/30/EC ; Electromagnetic  
compatibility directive.

**Construction:**

- robust 3 mm steel sheet construction welded and bolted assembly;
- powder coated RAL 5010, 40-60 µm.;
- rotor in 2 mm steel with 6 neoprene blades.

Model	Volume* (m3/h)	Installed power (kW)	Rotor speed (rpm)	A (mm)	B (mm)	C (mm)	D (mm)	E (mm)	F (mm)	Weight (kg)
RVLA- 250	7,4	0,75	17	250	316	150	285	158	457	51
RVLA - 500	13,7	0,75	17	500	566	450	535	158	457	77
RVLA - 750	21,1	0,75	17	750	816	600	785	158	457	94
RVLA - 1000	29,1	0,75	17	1000	1066	900	1035	158	457	110

\* Volume output at 50% rotor of filling

**Options:**

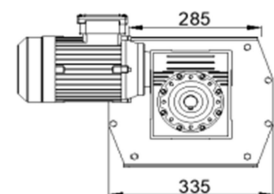
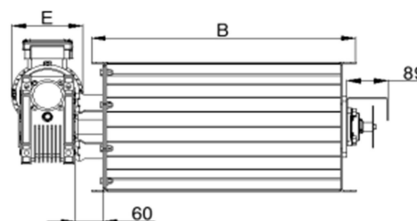
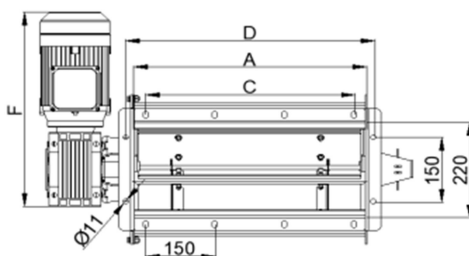
- Other RAL colors;
- Other rotation speeds;
- Other rubber blades.

**Spare parts:**

- Replacement rubber blades;
- Replacement rotor;
- Replacement motor and gear.

**Accessories:**

- Counter - flanges;
- Transition pieces;
- Suction pipes RORS.



# RVLA – Zellenradschleuse

geschweißt aus Stahlblech 2-3mm, Farbe RAL 5010

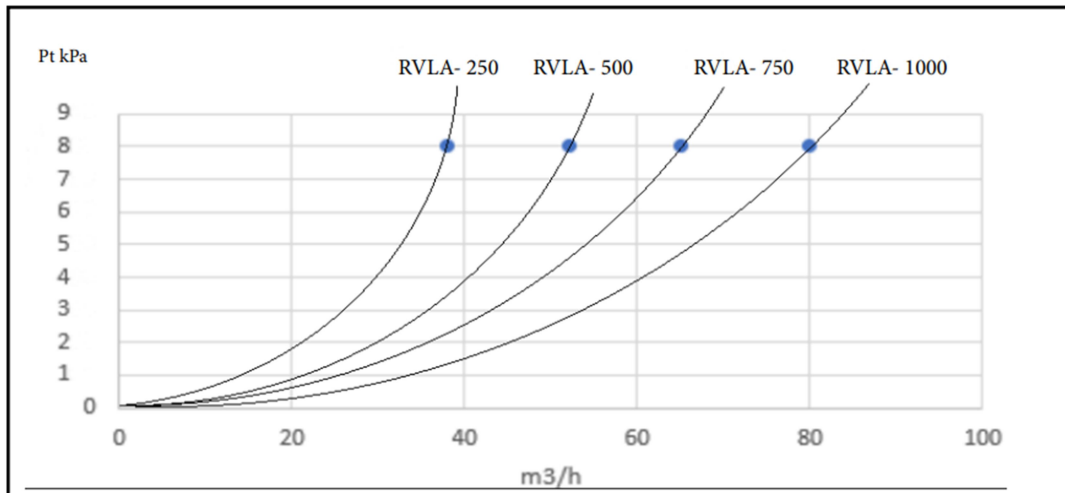


Diagramm zeigt Lecklufrate gemäß Druckverhältniss

## Geared motor details

The off-axis construction offers a reliable and robust construction for heavy duty applications. The right-angle geared motor assembly offers a more compact installation space compared to traditional in line geared motor conceptions. PTC of electrical motor has to be connected for safety purpose.



### Gear details:

Model: ZMSF 075 - PAM 80 H28 JAL-MAC  
 Ratio: 1/60  
 Flange type: B14  
 Drive shaft: Ø28 mm  
 Oil type: Synthetic oil ISO VG 320

*Possible gear and motor assembly position:*



### Motor details:

Model: IE3 - MSE802-4  
 Size: 80  
 Power: 0,75 kW ( 1 CV )  
 RPM: 4P  
 Voltage: 230 / 400  
 Efficiency: IE3  
 Insulation class: IP 55 S1  
 Bearings: 6204 2RS C3  
 Flange type: B14

